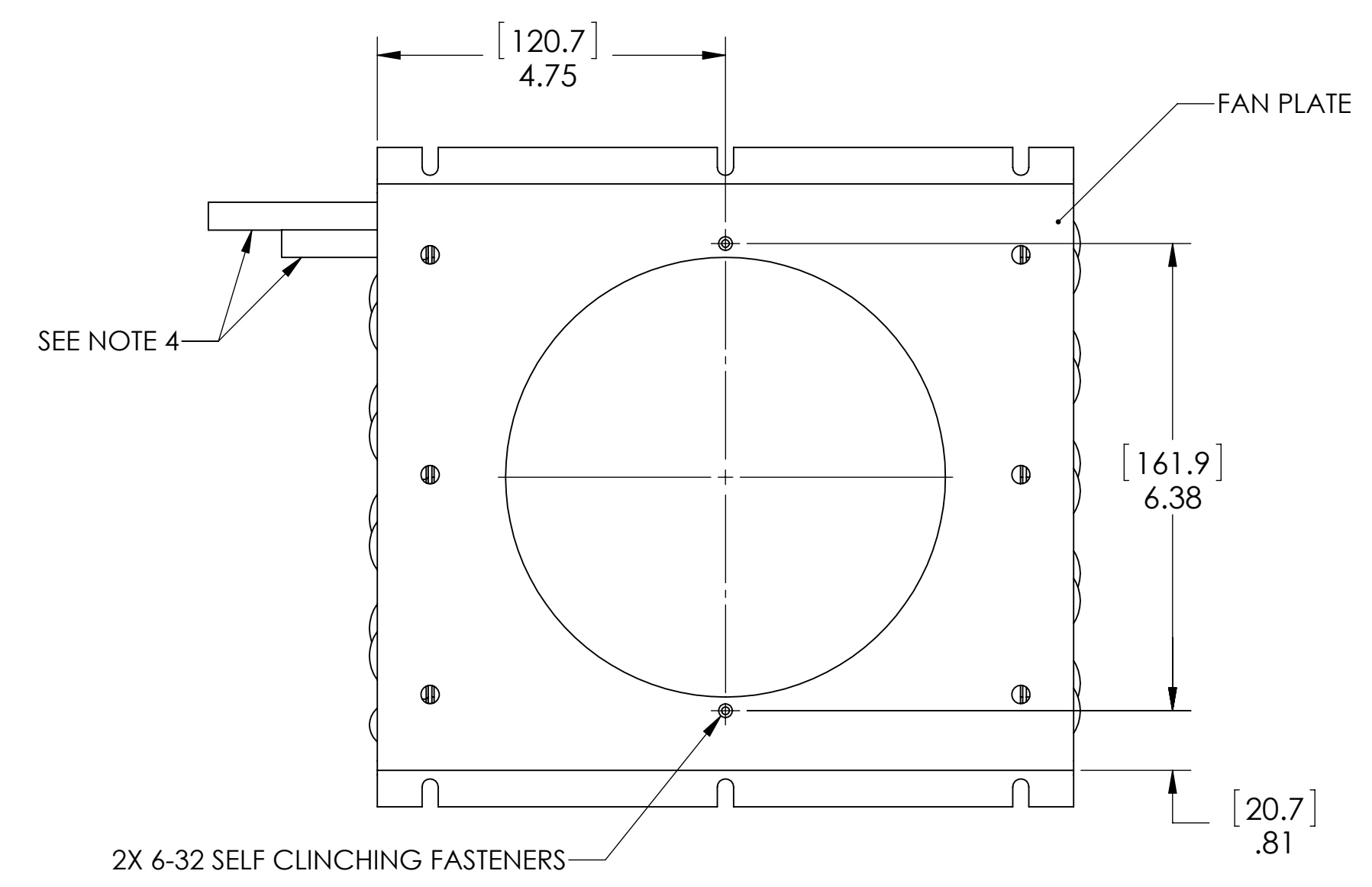
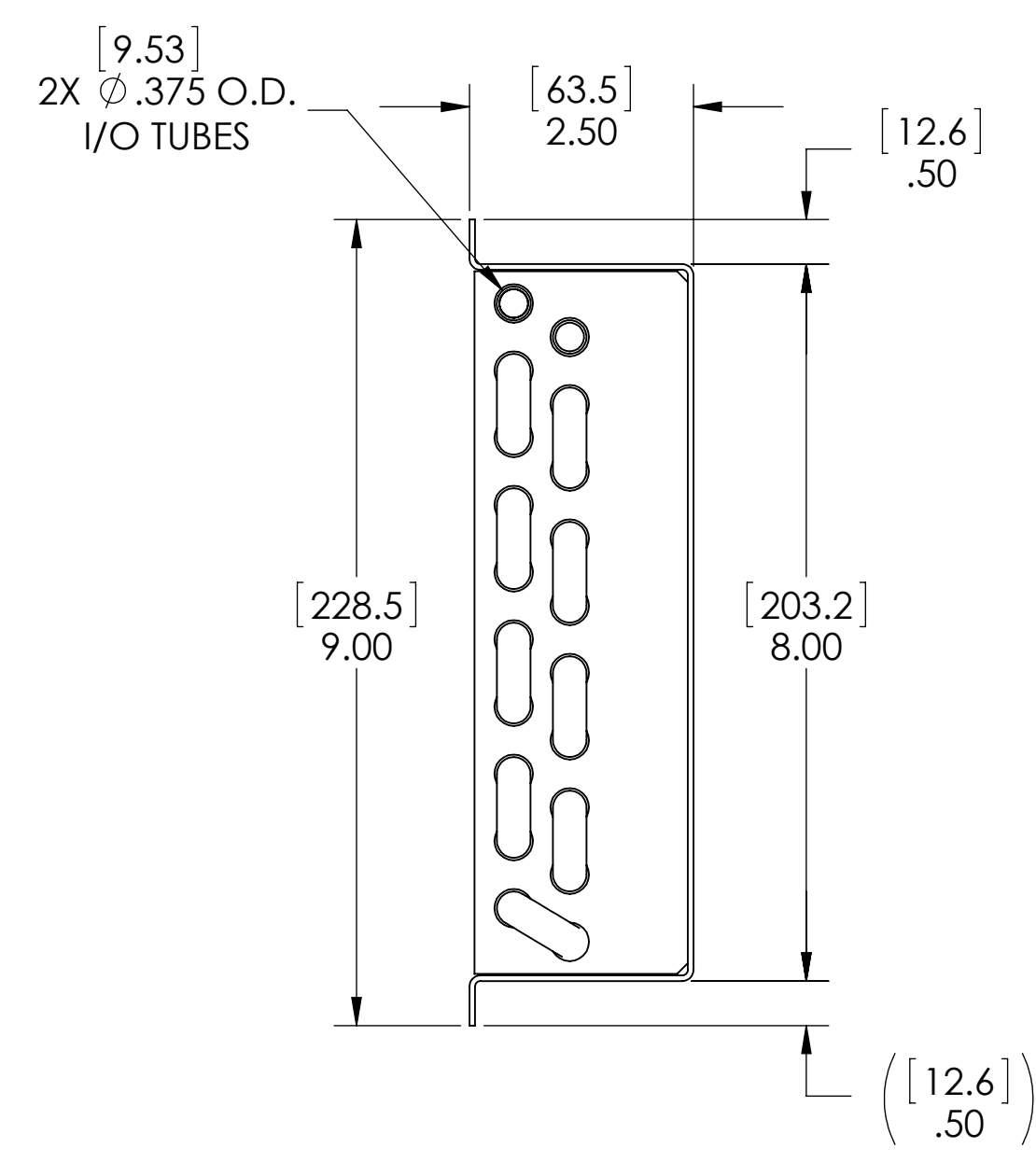
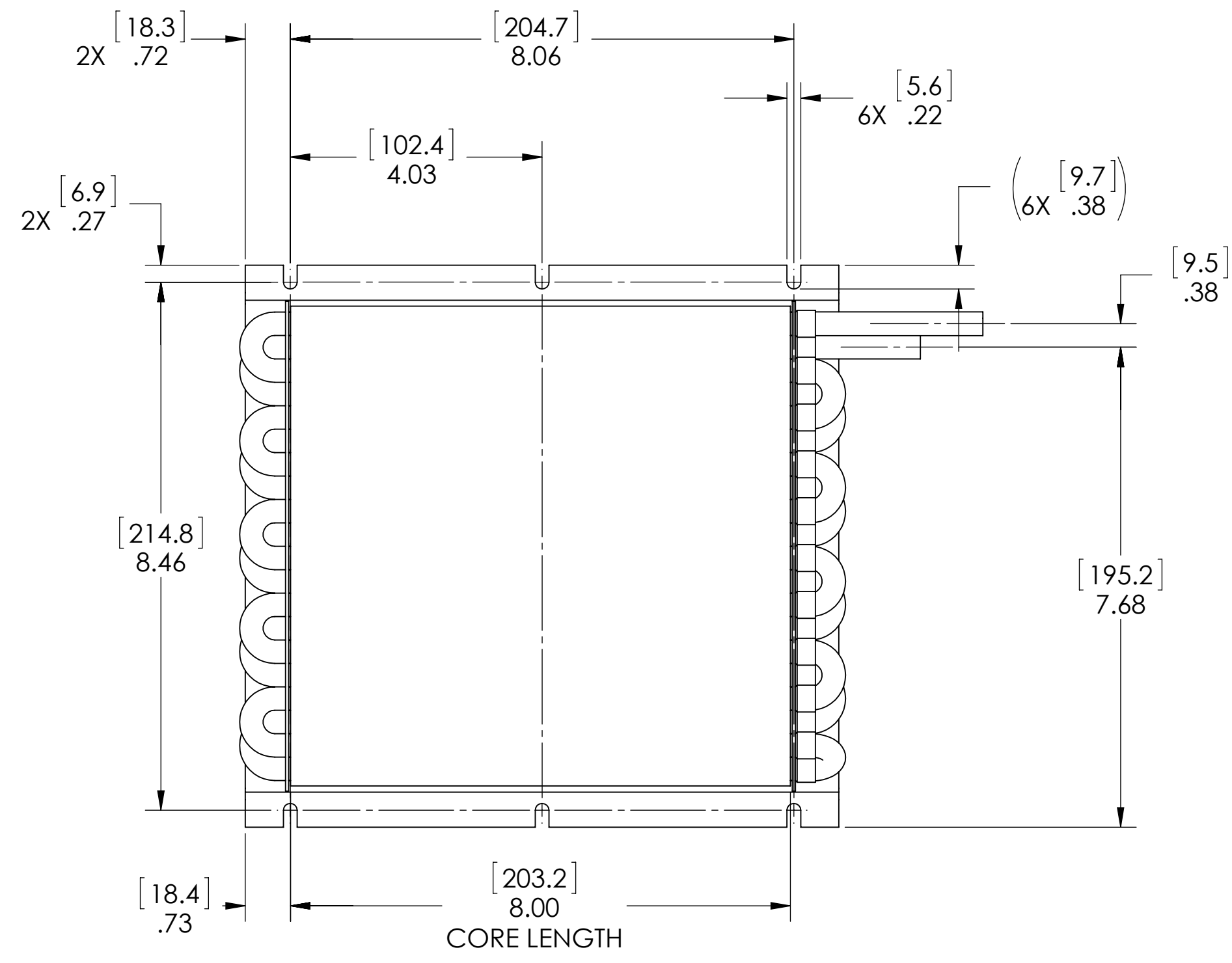
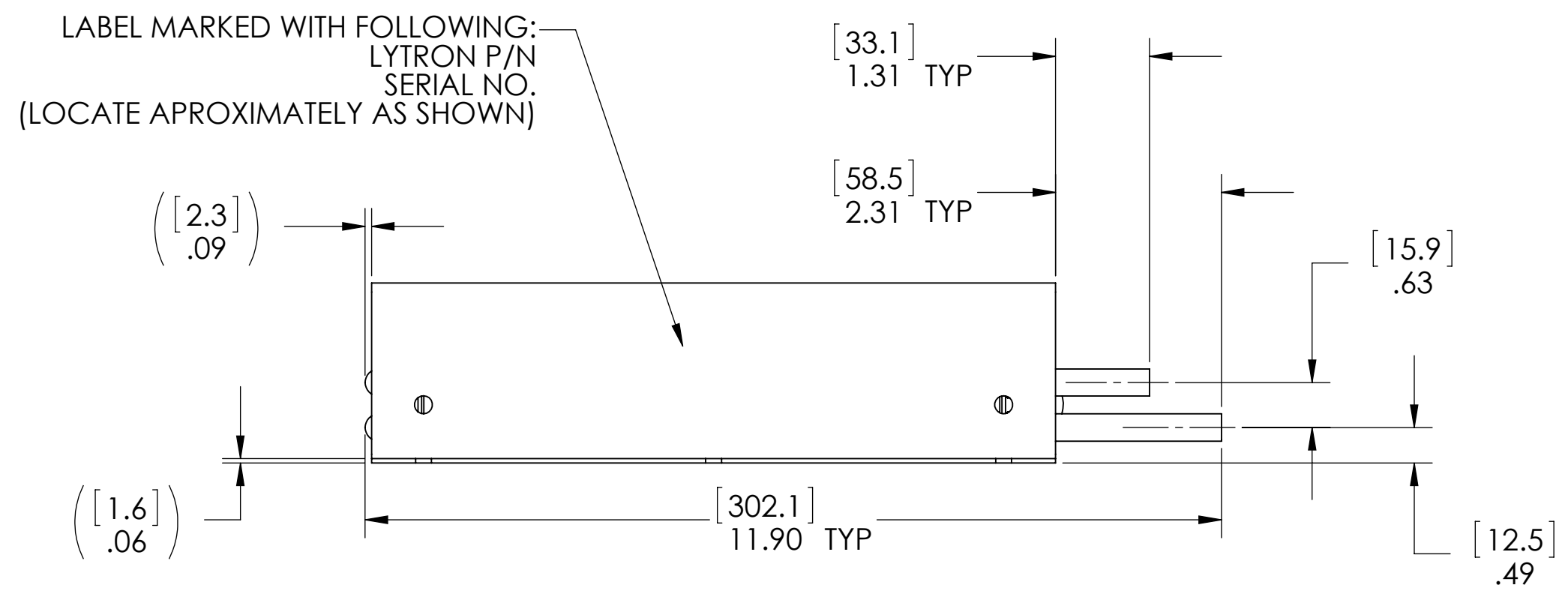


THIS DOCUMENT IS THE PROPERTY OF LYTRON, INC. AND REPRESENTS A PROPRIETARY ARTICLE ON WHICH LYTRON, INC. RETAINS ANY AND ALL PATENT AND OTHER RIGHTS, INCLUDING EXCLUSIVE RIGHTS OF USE AND/OR MANUFACTURE AND/OR SALE. POSSESSION OF THIS DOCUMENT DOES NOT CONVEY ANY PERMISSION TO REPRODUCE THE DOCUMENT OR MANUFACTURE THE ARTICLE OR ARTICLES SHOWN THEREIN.



6210G1SB

- NOTES:
1. DIMENSIONS IN [] ARE IN MILLIMETERS.
 2. LEAK TEST-PNEUMATIC PRESSURE TEST AT 150 PSIG.
 3. FINISH WILL BE AS FOLLOWS: SEMI GLOSS BLACK ACRYLIC PAINT.
 4. 1" OF END OF FITTINGS TO BE FREE OF PAINT.

MATERIAL	
TUBING	COPPER
OUTER FIN	COPPER
FITTINGS	COPPER
FRAME	ALUMINUM

UNLESS OTHERWISE SPECIFIED		REDRAWN	DATE	Lytron Inc. 55 Dragon Ct. Woburn Ma. 01801			
ANGULAR DIMENSIONS ARE ±5° SURFACE ROUGHNESS 125 / (3.2 um) BREAK EDGES .010 MAX. REMOVE ALL BURRS		DRAWN					
TOLERANCE ON DECIMALS		APPROVED		DRAWING TITLE			
X .XX .XXX		APPROVED					
INCH ±.1 ±.06 ±.020		DO NOT SCALE THIS DRAWING		HEAT EXCHANGER ASSY			
(mm) ±.20 ±.XX ±.XXX							
THIRD ANGLE PROJECTION		MATERIAL	SEE CHART	SIZE	FSCM NO.	DRAWING NO.	REV
DIMENSIONS AND TOLERANCING ARE PER ANSI STD Y14.5		FINISH	NONE	D	11245	S-6210G1SB	P
		SCALE	1/1	WT.		SHEET 1 OF 2	